



SEEN & HEARD



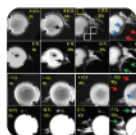
“My biggest question from 2018 continues to be: Why does normal-tension glaucoma exist, and how can we safely treat it?”

JOHN P. BERDAHL, MD,
of Vance Thompson Vision,
Sioux Falls, South Dakota, in
Cataract & Refractive Surgery Today



Lori Provencher, MD @DrLorraineEyeMD · 5h

Where should we target placement of TM bypass stents - pigmented areas of TM...or maybe not? New research from @ShileyEye @DohenyEye shows TM bypass can rescue regions of low aqueous outflow. #MIGS #glaucoma #ophthalmology #cataractsurgery #cataract @ManjoolShah



Ophthalmology @AAOJournal

Aqueous angiography shows outflow improvement is possible with trabecular micro-bypass, including the potential to rescue regions of previously low outflow. #glaucoma #MIGS ow.ly/ux6g30ngjDI

► LORI PROVENCHER, MD, of Kellogg Eye Center, University of Michigan, on Twitter @DrLorraineEyeMD



Dr. Glaucomflecken @DGlaumflecken · Jan 6

A lot of you have asked about Lumify. This is low concentration brimonidine, which is a glaucoma medication. It's marketed as a redness reliever and is a much better option than noted poison and occasional murder weapon, Visine. I would not confiscate this from you at an eye appt



► DR. GLAUCOMFLECKEN, on Twitter @DGlaumflecken

“A lot of questions remain unanswered: What are we going to do with those patients who received a CyPass? Should we explain the device in all cases as a precautionary measure? What is the medicolegal situation? Who bears the financial responsibility? Are patients entitled to some sort of compensation, and the surgeon to reimbursement for follow-up procedures?”

H. BURKHARD DICK, MD, PhD,
of University Eye Hospital, Bochum, Germany,
in *Cataract & Refractive Surgery Today*



TOP MIGS UNPLUGGED EPISODES OF 2018

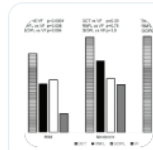
<http://eyetu.be/kkjef>

1. Deciding on an Appropriate MIGS Procedure
2. Ensuring Proper iStent Placement



Manjool Shah, MD @ManjoolShah · 11 Dec 2018

Timely detection of #glaucoma progression allows us to take action sooner. The time has come to use OCT like we used to use VF's. As we continue to get better at this, hopefully we will be able to detect damage even earlier, or prevent optic nerve injury altogether! @AAOJournal



Ophthalmology @AAOJournal

Progression more commonly detected by OCT than VF in mild & severe #glaucoma, staged w/ ICD codes. OCT represented the initial progression event in 85% of progressors. ow.ly/e2KQ30mScCn

1 9 12

► MANJOOL SHAH, MD, of Kellogg Eye Center, University of Michigan, on Twitter @ManjoolShah